

Stribling Road Improvements

Madison County, Mississippi



PROJECT MANAGER

Shannon Wells, PE, PS

1076 Highland Colony Parkway
Suite 325

Ridgeland, MS 39157

601-941-3252

MSWells@GarverUSA.com

Madison County

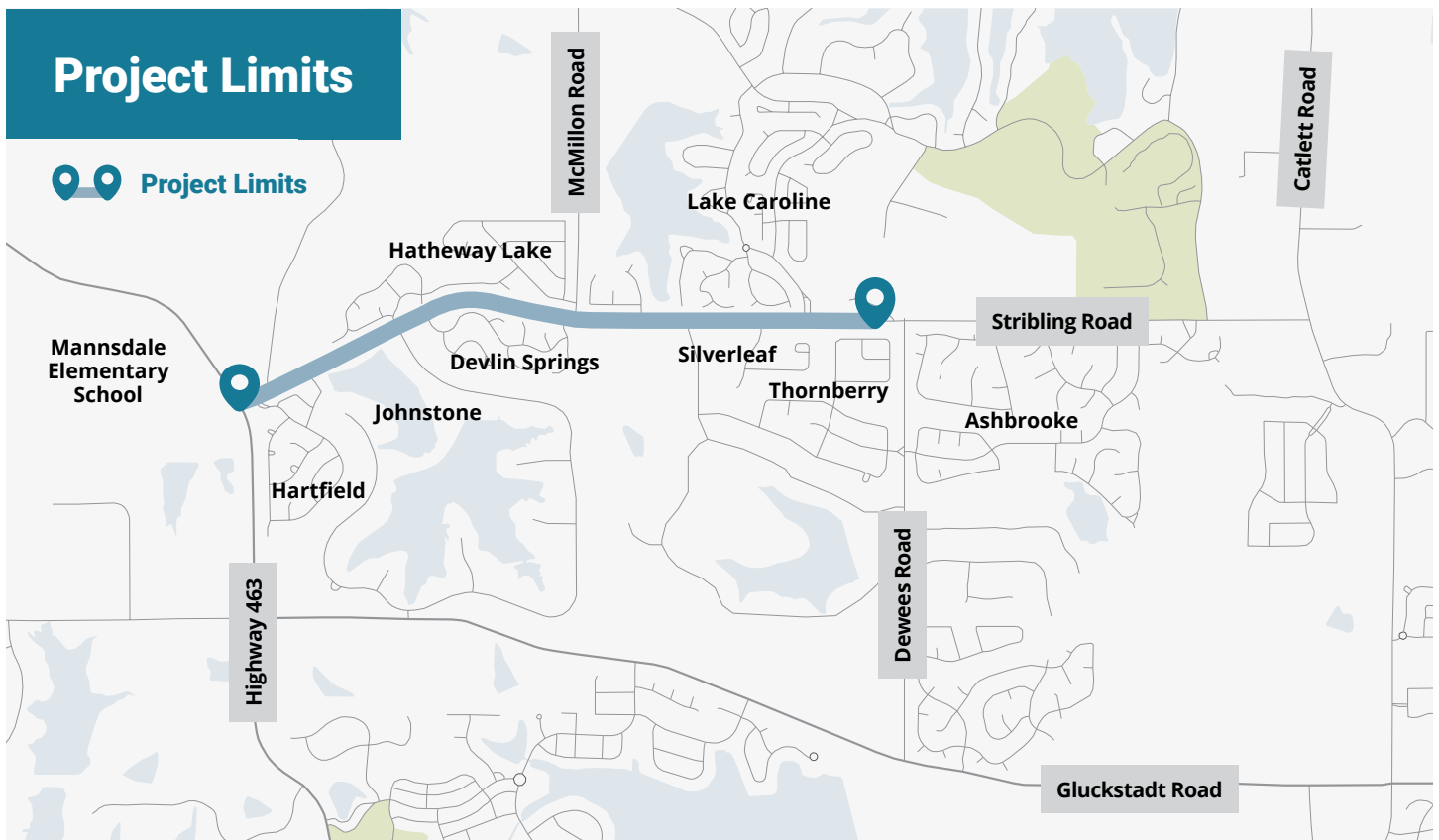
Project Description

Stribling Road Improvements from
Highway 463 to Dewees Road



Project Limits

Project Limits



Stribling Road Improvements

July 21, 2025 Update



Progress to Date

Stribling Road (Highway 463 to Dewees Road)

Contract Value: \$803,000

Contract NTP: November 4, 2024

Amount Invoiced to Date: \$298,072.78

■ Environmental

- Report is substantially complete, awaiting completion of updated preliminary roadway design information
- Cultural resources survey completed – no adverse impacts due to project

■ Traffic Analysis

- Memorandum is complete. A 5-lane configuration west of McMillon Road, tying into a 4-lane section at Highway 463 to match MDOT's proposed project
- Analysis recommends intersection improvements at Camden Crossing

■ Geotechnical

- Final report is complete, including recommendations for pavement structure and subgrade undercut and backfill limits

■ Roadway:

- Considering multiple factors, a 5-lane configuration throughout the project was selected as the preferred section, connecting to the 4-lane MDOT project at Hwy 463
- Roadway model for a 5-lane configuration throughout is +/-75% complete
- Drainage design has begun
- Preliminary design drawings are being developed

■ Utilities

- Coordination meetings were held on May 6-7 with CMU (water), Entergy (power), Delta Utilities (gas), AT&T (comm), C-Spire (comm), and Bear Creek W.A. (water/sewer)
- With the exception of overhead power, all utilities can be designed and relocated within 6 months of receipt of preliminary ROW plans
- According to Entergy, design may commence when ROW is acquired and preliminary plans are provided, and a schedule for power relocation will be developed at that time
- Power relocation is in the critical path to advertising the project for bids

■ Right-of-Way Acquisition

- Preliminary design progress indicates +/- 40-45 parcels affected

■ Public Involvement

- A meeting was held with Hartfield HOA on June 5th to discuss an alternate entrance to the neighborhood. It was communicated to the HOA that unrestricted access via the existing entrance is not functional (discussions with the HOA are ongoing)

Stribling Road Improvements

July 21, 2025 Update



Anticipated 3-Month Projection of Work

■ Environmental

- Submit wetlands report to USACE

■ Roadway

- Complete the roadway model and drainage design
- Continue development of preliminary design drawings, which will include storm drainage, construction sequencing, and traffic control
- Begin design of intersection improvements at Camden Crossing

■ Utilities

- Continued coordination as preliminary design progresses
- Begin permitting process for Delta Utilities gas pipeline crossing west of McMillon Rd

■ ROW:

- Begin title work for affected parcels

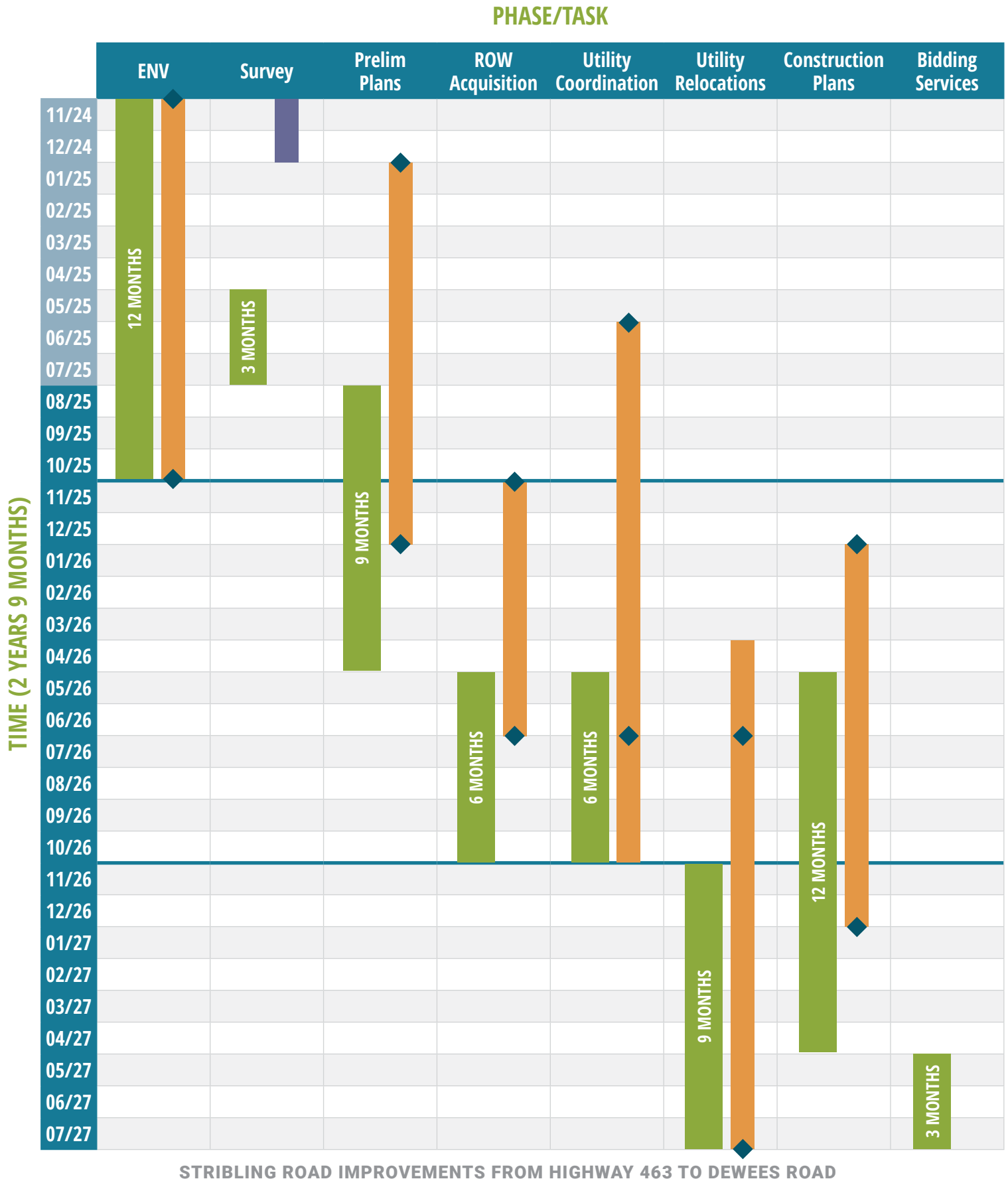
■ Survey:

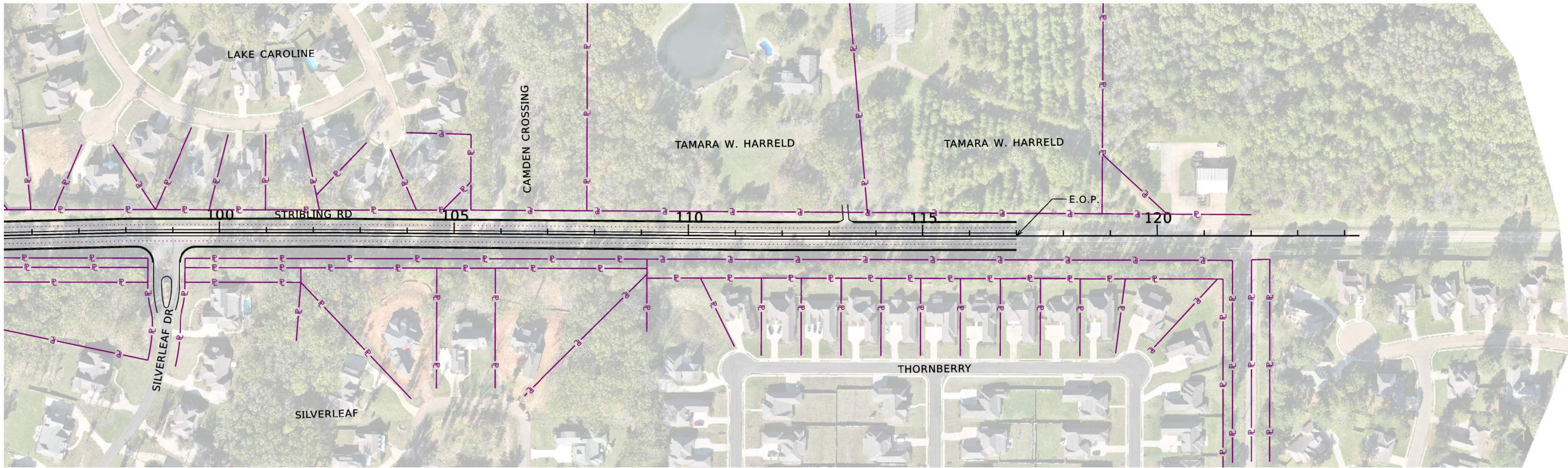
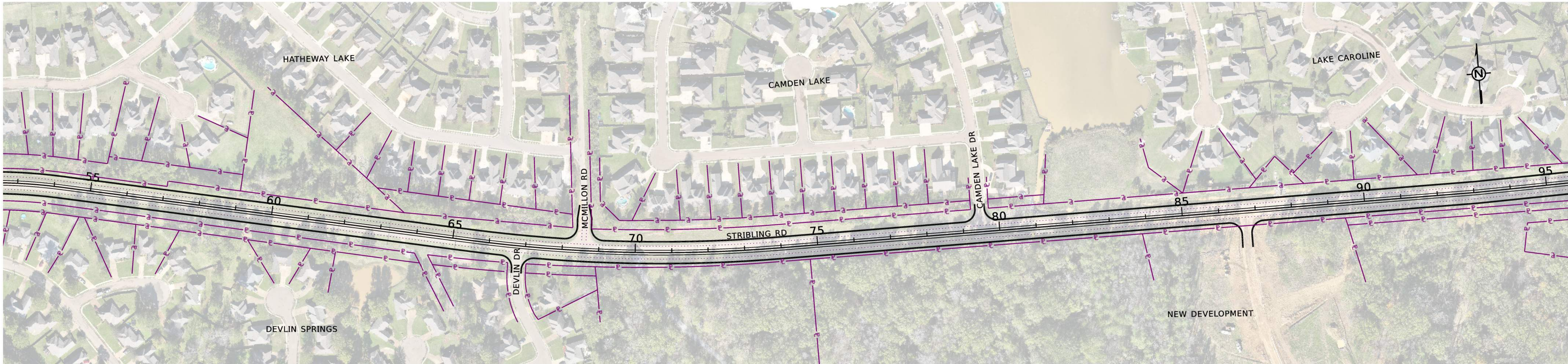
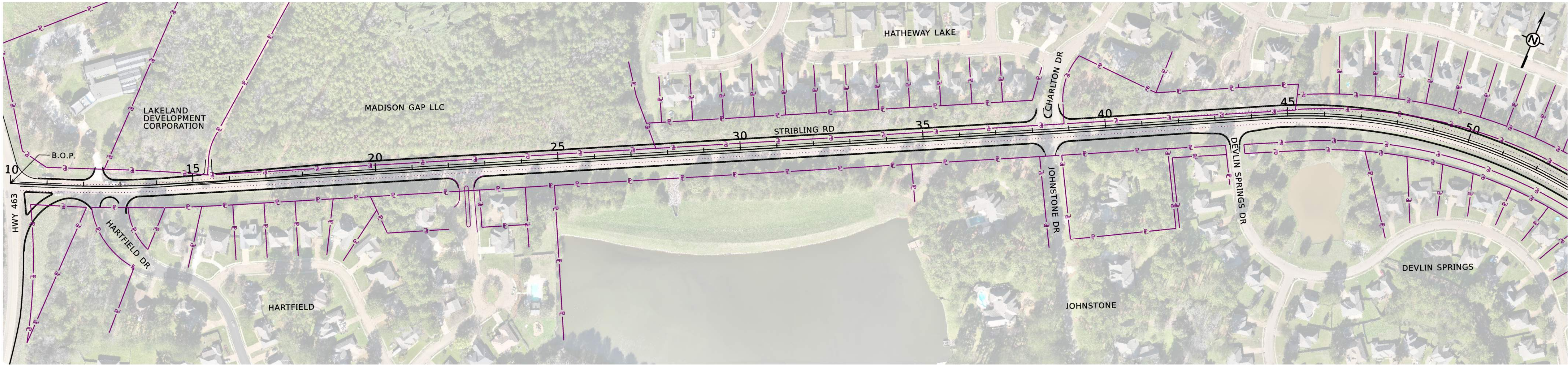
- Begin boundary survey work for parcels to be acquired

Project Design Schedule

Legend

- Original Preliminary Schedule
- Updated Schedule (July 21, 2025)
- Substantially Complete
- ◆ April 21, 2025 Update





© 2025 GARVER, LLC
THIS DOCUMENT, ALONG WITH THE
IDEAS AND DESIGNS CONVEYED
HEREIN, SHALL BE CONSIDERED
INSTRUMENTS OF PROFESSIONAL
SERVICE AND ARE PROPERTY OF
GARVER, LLC. ANY USE,
REPRODUCTION, OR DISTRIBUTION
OF THIS DOCUMENT, ALONG WITH
THE IDEAS AND DESIGN CONTAINED
HEREIN, IS PROHIBITED UNLESS
AUTHORIZED IN WRITING BY
GARVER, LLC OR EXPLICITLY
ALLOWED IN THE GOVERNING
PROFESSIONAL SERVICES
AGREEMENT FOR THIS WORK.

REV.	DATE	DESCRIPTION	BY



MADISON COUNTY
BOARD OF
SUPERVISORS

STRIBLING ROAD
WIDENING -
HWY 463 TO DEWEES RD

SHEET INDEX

PROJECT
LAYOUT

JOB NO.:

DATE:

DESIGNED BY:

DRAWN BY:

BAR IS ONE INCH ON
ORIGINAL DRAWING
0" 1"
IF NOT ONE INCH ON THIS SHEET,
ADJUST SCALES ACCORDINGLY.

DRAWING NUMBER
PL - 1

SHEET
NUMBER **1**